



Namaste Community Foundation

Lakeside, Pokhara-6, Nepal | Tel: +977-61-462449 | www.ncf-nepal.org



HELP REBUILD NEPAL

NEPAL EARTHQUAKE 2015

**200 TEMPORARY SHELTERS CAN SAVE A
MINIMUM OF 1000 PEOPLE'S LIVES**



Index

Chapter	Page Number
Greatest Nepal Earthquake 2015 :Facts & Figures	3
About: Namaste Community Foundation - Nepal	4
How the support started ?	5
1st Distribution - Gorkha	5
2nd Distribution - Gorkha	6
3rd Distribution - Nuwakot	6
4th Distribution - Dhading	6
5th Distribution - Sindhupalchowk	7
Experience of Eury Jeong	8
Progress so far ...	9
Next Project ...	10
Scholarship to the 500 quake affected Children	10
200 Temporary Shelter Project	10
Why is Temporary Shelter so Urgent ?	11
Role of Government, I/NGOs and others	11
Photo Gallery (Relief Aid Preparation & Distribution)	12
Our Bank Details	13

Greatest Nepal Earthquake 2015 :

Facts & Figures



Statistics

Deaths : 8,629
Casualties : 18,000

Most affected Districts

- Sindhupalchowk
- Kathmandu
- Nuwakot
- Dhading
- Rasuma
- Gorkha
- Bhaktapur
- Kavrepalanchowk
- Lalitpur
- Dolkha

Nepal was hit by a massive earthquake of 7.9 magnitude on 25th April 2015 – Saturday and was again hit by a 7.4 magnitude earthquake on 12th May 2015. The earthquake was so huge that it took 8629 innocent lives (As per Nepal Television, 21 May 2015, 8:00 pm) leaving more than 18,000 casualties behind. Many children became orphans, many are now homeless and every one of them are pleading for help.

Eleven of the districts, namely Dhading, Gorkha, Rasuwa, Sindhupalchowk, Kavre, Nuwakot, Dolakha, Kathmandu, Lalitpur, Bhaktapur and Ramechhap were most affected by the earthquakes of 25th April and 12th May 2015.

According to the report of www.earthquake-report.com, 751,000 households or around 626,000 structures have been damaged or destroyed by the massive earthquakes. 334,000 students have had their classrooms destroyed, an additional 137,000 students have had their classrooms with major damage and another 260,000 students with minor damage. In total, 337 students were killed, with the death count not being completed on all schools.

About:

Namaste Community Foundation - Nepal

Namaste Community Foundation (NCF-Nepal) is a not-for-profit, non-political, humanitarian organization and is not affiliated with any religious group or organization. It is registered as an NGO in Nepal with the motives of furthering development activities for the needy children and women's sector of Nepal and is affiliated with the Social Welfare Council, Kathmandu. NCF is dedicated towards providing education, healthcare and love in a safe home-style environment for the poor, needy, orphaned and abandoned children of Nepal.

NCF – Nepal was established in the year 2003 by Founder/Director Mr. Visma Raj Poudel and it has successfully completed 12 years of its journey in the social field. (For more details, please log on to: www.ncf-nepal.org)

Today our beloved motherland – Nepal is in great need of our support because of the massive earthquake of 7.9 magnitude on April 25th 2015 and 7.4 magnitude on 12th May 2015. It has taken more than 8621 innocent lives and has left more than 18,000 casualties (As per Nepal Television, 21 May 2015, 8:00 pm).

It has demolished many of the historical places including Dharahara and Basantapur Durbar Square. Because of this massive earthquake, many of the Nepalese children are now orphaned, homeless and/or injured.

In this tragic situation, NCF-Nepal has already started working for the people in need. We have recently provided emergency relief packages costing Nrs 30,00,000/ USD 30,000 (three million Nepalese Rupees) to the victims of the 4 most devastated places, namely Gorkha, Nuwakot, Dhading and Sindhupalchowk.

Being responsible citizens and a trustworthy social organization, we are trying our level best to help many of the people in need and we are exploring more areas to help.

How the support started ?

Synopsis



The very first support to the quake victims started with 20% of the fund collected from our program, 7A Side Championship Trophy 2015. We prepared the emergency relief packages costing 200,000 Nepalese rupees (2000 USD) from the profit of the championship and started our distribution.



1st Distribution - Gorkha :



The first point of our help was targeted toward Gorkha as it was the most affected area. We distributed 100 relief packages to the earthquake victims but that quantity was not enough. We witnessed the hardship of their lives and saw the damages caused by the quake and promised them to return back with more relief packages.

2nd Distribution - Gorkha :



Along with our staff and with some Chinese friends, we extended our helping hands toward the Gorkha area again because by that time we had realized the grief and the exact situation of the victims. This time we distributed 300 relief packages in that area before returning to Pokhara.

3rd Distribution - Nuwakot :



Taking a very long drive we finally reached Nuwakot at around 1:00 am. We had a hard time on the way but all of that was nothing compared to the misery of the people living there. There was not even one house standing. People were forced to spend their nights under tripols or under the open sky. We distributed 250 relief packages to the people affected.

4th Distribution - Dhading :



Dhading is one of the most earthquake affected districts of Nepal. No buildings were left standing in the entire village even though it has a lower death toll.

We distributed 250 relief packages to the affected people.

5th Distribution - Sindhupalchowk :



We went to Sindhupalchowk as our last distribution effort before we start our temporary shelter project. Sindhupalchowk is the most affected area in a sense that, along with the physical destruction, the death toll is around 3,000 but is still climbing. We witnessed the massive destruction caused by the earthquake where not a single house was left unharmed. We

succeeded in distributing 130 relief packages and 75 tents to the people affected in that area.

Despite our regular programs and schedules, we, along with some foreign friends, are dedicating ourselves to serving the earthquake victims. We have raised funds to help the quake victims. Many of our foreign friends helped us in collecting funds for the emergency aid packages. It is not only what we are doing but also what the Nepal Government itself and many of the I/NGOs are involved in with these kinds of activities. Because of the geographical infrastructure the government is not able to reach every corner and, because of the lack of expertise, not everyone can get involved in helping the victims.

We need to appeal for more help and we have conveyed this message to the world via our website, facebook page, newsletter, etc. Till date we have completed 5 of our emergency relief package distribution programs and this would not have been possible without your love, care and generous support. We highly appreciate all those big hearts and helping hands, locally and globally, for all your effort and hardwork to help the victims.

We would like to ask for your continued support with our Resettlement Project (200 Temporary shelters).

See how Eury Jeong (volunteer at NCF – Nepal) shares her experience and supports us in our campaign

“I had the opportunity to accompany the NCF-Nepal team during one of the trips to distribute earthquake relief packages to a nearby village. It was one of the most humbling and eye-opening trips I’ve ever been on. It took us quite a bit longer than initially expected to reach the village, but though we were very late, everybody was still up and waiting patiently for the supply truck to arrive.



It was quite dark by the time we arrived so I did not get the chance to have a good look at the state of the entire village, but I will describe the one home I got to inspect. What I initially saw was what seemed to have been a room that had been left to nothing but a doorframe and about three inches of wall left from the ground up. As I continued looking around the property I saw that none of the rooms had a proper roof left, and there was no safe covering from the rain or any other natural weather that might occur.

I only saw a small part of the village but that was essentially the condition of all the homes I did get to pass by. However, even with the devastating state the village was in, the people of the village were still wearing some of the biggest and most beautiful smiles I’ve ever seen, there was laughter, endless gratitude, and so much love. There was no hesitation to provide us with tea and even a hearty meal, which was honestly the most delicious meal I have had in Nepal to date. We were the ones coming there in order to provide rice, mats, tents and other supplies to the families who have been left with nothing, yet they were more than happy to share all of this with us. I left feeling humbled and full of joy and love.

I could share how devastating the state of the village was or how heartbreaking it was to see that these people had next to nothing, but I would rather express how amazing and strong-willed these people are. Amongst all this tragedy, there is still more love, kindness, and joy than I have yet to find anywhere else in the world.”

- Eury Jeong

Progress so far ...

NCF – Nepal succeeded in organizing 5 official distribution of relief packages in 4 different districts in support of Nepal Government agencies, local people and the dedicated staff members. All the help from the government offices, local people and staff members is highly appreciated.

We took the initiative in supporting the earthquake victims and later on many helping hands united with us which made us serve more effectively and efficiently. A group of Chinese people united with us in our campaign from our 2nd distribution to Gorkha and supported the campaign financially and physically till our fourth distribution to Dhading.

Later on, our partner agencies Namaste Foundation–Netherland and Wind of Change International collaborated with us with the same vision of helping the victims.

To raise the funds to help the victims we have published a new section on our website. Please visit www.ncf-nepal.org for all the updates about the earthquake. We have also been updating news regarding our support and the prevailing situation of the respective areas in our facebook pages. visit www.facebook.com/namaste-community-foundation-nepal and www.facebook.com/walkforkids2015 .

We have also been sending out our newsletter, including the details of how we have been helping with the earthquake situation, to all our partner agencies, donors, volunteers, supporters, wellwishers, etc. so that the world can unite with us in our mission #savenepal.

We sincerely thank all the people, organizations, institutions, government bodies and charities involved locally and internationally with us in accomplishing our mission. It was not possible for us to distribute the relief materials on our own and so thanks once again for all your support. We hope you will continue the same kind of support for our upcoming shelter project.

Next Project ...

Scholarship to the 500 quake affected Children

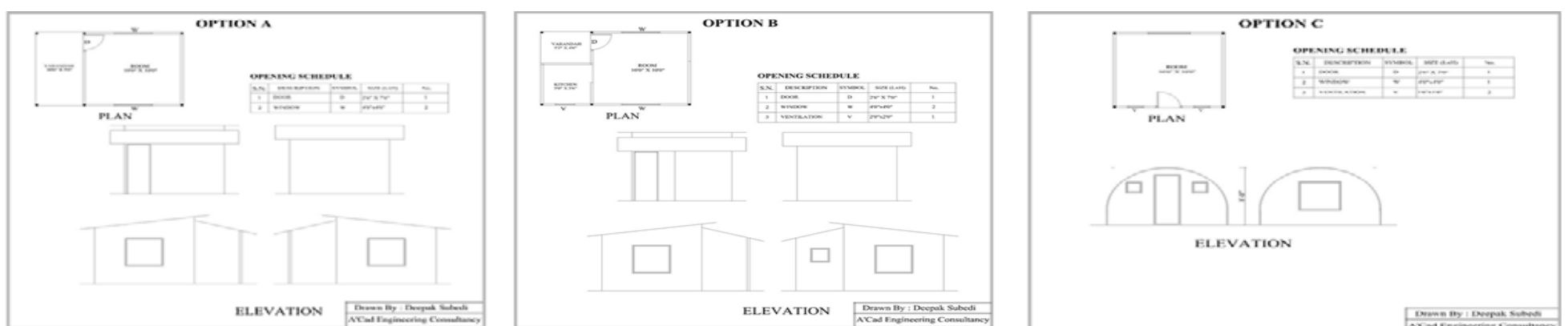
Very soon we will be distributing educational materials to around 500 students in coordination with the District Education Office. We don't want any child's future being destroyed just because of this earthquake. We don't even want any child's psychology to be shaped by these earthquakes that dismantled Nepal. Therefore, being a humanitarian organization working in the field of children and women, it's our duty to ensure a child's right to education, even though their willingness to study has been crushed by the massive earthquake of 25th April 2015.

No worries we will make this happen and again the children of Nepal will go to school with a hope of a bright future. We will again be able to see a glimpse of the smile on a child's face. And this will all be possible just because of your help, support and generosity. Total cost of this project is 15,000 USD, which is already sponsored by some of our partner charities (NF Netherlands, WoC-Australia/Finland, IBSH-Australia, FOC-Germany) abroad and few supporters.

200 Temporary Shelter Project

After the distribution of relief materials going to the most affected areas, we realized the immediate need of temporary shelter as the monsoon season is about to hit. The Earthquake caused massive financial and human loss and we don't want any further loss due to the lack of proper shelter. Therefore, we plan on providing 200 temporary shelters in different parts of Nepal using a very minimum budget providing them with comfort and hospitality. The house, that is going to be constructed by local people with NCF–Nepal's guidance, would last a minimum of 2 years and the materials used for the construction will be able to be reused. This will also include toilet facilities for sanitation. We have already consulted with our engineers regarding this matter and we have outlined the sketch of temporary shelter for the homeless people.

Each shelter will cost 35,000 Nepalese Rupees (USD 350) and will included a kitchen, a bedroom and a toilet/bathroom for sanitation. Below are the three sketches for the temporary shelters where we find "B Model" more practical.



Why is Temporary Shelter so Urgent ?

As the Monsoon season is approaching, the earthquake victims are in immediate need of temporary shelter. Due to the recent earthquake, thousands of people are now homeless and are doomed to spend their days and nights in tents or even under the open sky. The tents, provided for them in the beginning, cannot resist the heavy rainfall of the monsoons so we have realized the immediate need of temporary shelters.

Due to the lack of proper shelters and toilets, people in the affected areas may contract different health problems and epidemics may arise. Hence, it is very important for us to act accordingly, keeping all these consequences of the earthquake in mind.

Role of Government, I/NGOs and others

As we look back to the 25th of April 2015 and what has happened since, we can see the greatest involvement of the Nepal Government in providing support to the earthquake victims. Yes, it is true that we were not prepared for this kind of natural disaster but the involvement that everyone else has shown is praiseworthy. Not only the Nepal Government but also the different NGOs and INGOs working in different sectors came out with support in time of NEED.

We have also been accumulating international support as well from our neighboring countries, China and India. In addition, many other countries like the USA, Japan, Denmark, Finland, Germany, Switzerland, Israel, other countries from European Union, UK, Canada, Australia, etc. are also providing their financial assistance to our Motherland–NEPAL.

But, unfortunately, despite of all this support, nationally and internationally, the victims are not getting the necessary relief in a timely manner because of Nepal's geographical constraints. In this intense situation, NCF-Nepal and other local NGOs are playing a very crucial role in helping the victims by providing access to the relief packages.

NCF-Nepal, being the local NGO, is able to provide relief packages to the most rural areas of Nepal where the earthquake has caused major destruction. We act locally therefore we are familiar with the local infrastructures BUT we need your help and financial support.

Photo Gallery

Some photos from relief aid packages preparation & distributions



Our Bank Details

Those who are willing to contribute to our noble campaign of building the temporary shelters for the Earthquake victims of Nepal can simply transfer the support amount into our undersigned bank account:

Bank A/c Details

Bank Name: **Standard Chartered Bank Nepal Ltd.**
Beneficiary Name: **Namaste Community Foundation**
A/c No: **01-1269968-01** | Swift Code: **SCBLNPKA**

We will provide our official financial documents (if requested) to all those people united with us in our noble work and would like the same from you, as well.

A very positive note to add is that, due to there being no admin cost at all for these projects, 100% of your donations will go directly to the earthquake victims recovery and their well being.

Thank you all for your support and generosity.

Most Sincerely,

Visma Raj Paudel
Executive Director
Namaste Community Foundation

